

# XREF HVAC/R QUICK REFERENCE GUIDE

## TO FIND:

Cross Reference (Part # to Part #) . . . . .  
HVAC equipment by model # . . . . .  
Suppliers & distributors. . . . .  
Specs for motors, contactors, compressors, blower wheels, fan blades . . . . .  
Abbreviation definitions and code meanings . . . . .  
Material safety data sheets . . . . .

## CLICK ON:

- Cross Reference
- Equipment Model
- Supplier
- Part Specification
- Abbreviations and Codes
- MSDS

**Searching in**  Cross Reference **or**  Equipment Model : The Search Term box is not case sensitive

Enter a part or model number into the search box and hit <ENTER> or click the  button  
Narrow down your search by adding a brand (2001 GEM, 38YCC018300 UPG)  
Search for two items at a time by adding the word OR between terms (X000 OR FDL1026)

**Searching in**  Supplier : Enter a city and a brand (GRAINGER ATLANTA) to view contact information

**Searching in**  Part Specification : **USE THE FOLLOWING FORMAT TO ENTER PHRASES INTO THE Search Term box (Note - enter specs with a space between each phrase) See Help file Section 3 & 4 (Press F1 on keyboard)**

**Motors:** 1/3HP 1.5HP 115V 208-230V 1075RPM PSC SHADE 48 56 CW SE REV BB SLV OD TENV 2SPD 3PH AUTO NP RES STUD (note to return results for 230V motors that are dual voltage: enter \*230\*V – see WILD CARDS)  
**Contactors:** 2P FLA30A LRA125A COIL24V, COIL208-230V, etc.  
**Fan Blades:** D20 P27 5BLD AL CW HUBLESS, etc.  
**Compressors:** 115V 1PH RLA7.7A LRA38A 3/4 3/8, etc. For MBH, use wild cards: 3?.? for 30.0 through 39.9  
**Blower Wheels:** D15 W6 B0.5 REV CW DOUBLE INLET, etc.

(for a printable list of abbreviations, see Help file sections 3 & 4 : Press F1 or select View Help from help menu)

## Find SPEC records for motors, contactors, fan blades, compressors, & blower wheels:

- Motors:** Type D-158 and click the start button or hit enter to see the motor specs
- Contactors:** Type DP2030A1003 and click the start button or hit enter to see the contactor specs
- Fan Blades:** Type 1050852 and click the start button or hit enter to see the fan blade specs
- Compressors:** Type SFA5611EXG and click the start button or hit enter to see the compressor specs
- Blower Wheels:** Type 2-6088 and click the start button or hit enter to see the blower wheel specs

**Searching in ABBREVIATIONS & CODES:** to find the definition of a brand, spec detail abbreviation, part number replacement info code, or any other abbreviation in the XREF program:

Enter CH and hit <Enter> or click the start button to see the definition for the brand CH (Cutler-Hamer)  
Enter OD and hit <Enter> or click the start button to look up the spec detail abbreviation for Open Drip Proof  
Enter CODE MARS 19 to look up the code that follows a part number in cross reference: USE WITH 12005

## MSDS:

To look up a material safety data sheet, select  MSDS and enter the name of the material you wish to view information on. You may also print either the text you select, or the entire data sheet by clicking on the print button

**WILD CARDS:** Use \* (asterisk) in place of multiple characters - ? (question mark) substitutes one at a time

- \*1075\*RPM - to find single or dual voltage 1075RPM motors (see Users Manual: Searching In Part Specification)
- \*230\*V - returns 230V motors that may be in the Part Specification database as 230V, 208-230V, or 208-230-460V
- 5KCP39\* - \* substitutes multiple characters and returns all parts that start with 5KCP39 in any database
- 38YCC01\* - returns a list of the entire Carrier 38YCC01 series in the Equipment Model database
- 3ART?S2? - ? substitutes each single unknown or variable/insignificant character in any database

## CROSS REFERENCE A PART WHILE VIEWING AN EQUIPMENT MODEL PARTS LIST:

Click  Equipment Model and enter 38YCC018300. Then hit <Enter> to view that models' parts list. Next, click on the MTR COND part number (HC31GE232) to view cross reference information for that motor

# XREF HVAC/R QUICK REFERENCE GUIDE

**EQUIPMENT MODEL PART ABBREVIATIONS:** Click on the text for any part abbreviation to see its definition (MTR COND: Full Text = MOTOR, CONDENSER)

## KITS:

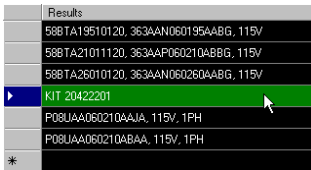
View the parts list for a kit in **Equipment Model** by entering it as such: KIT 20422201. Hit <Enter> to view the kit parts record (Note: entering only 20422201 will still bring up that kit parts list, however, the record for the kit will appear further down in the list, amongst all of the other equipment models that contain that kit)

## RULES/EXCEPTIONS:

AMANA “D69731-009” will be in as <D69731-9> (Nonessential zeros are usually eliminated)  
GE “WE0017X0032” will be in as “WE17X32” (Nonessential zeros are eliminated)  
YORK UPG “S1-1TVM4F1” will be in as <1TVM4F1> (S1- is always removed from the beginning of York numbers)  
YORK UPG “S1-02420043700” will be in as <024-20043-700> (hyphens are added to match their old numbering style)  
EMERSON “K1009” will be in as <1009>  
FASCO “D158” will be in as: <D-158>  
UNIVERSAL “90” will be in as: <U-90> (since these numbers are so short, we add a U- to the beginning)  
List of some brands put in as-is: Baldor, Carrier, Lau, Lennox, Rheem, RobertShaw, Tecumseh

## USING THE ‘OR’ FUNCTION:

To compare two (or more) spec records in **Part Specification** or two model parts lists in **Equipment Model**, enter the word OR between each search term as such: D-156 OR BL6412. In the Specifications database, you will be able to compare the two motor specs side by side



In the Equipment Model database, you can click back and forth between models in the result list below the Combined Results box to compare their parts lists

Also, if you want to find crosses in **Cross Reference** for more than one brand, enter the search terms as such: X000 GE OR PACK. Within the results you will see any records with X000 and the GE brand or any records with X000 and the TRANE brand, as well as any records with X000 and both GE & TRANE brands

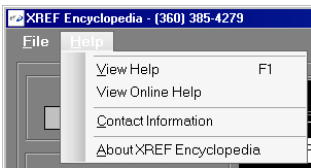


## TOOLS & PROGRAM FEATURES:

To resize the program window, hover over the bottom right corner of the window until your mouse pointer becomes a double arrow. Then click and drag the window to your desired size

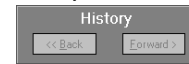


Resize the results list font by clicking the – or + buttons

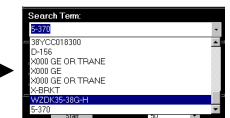


Access the help file by choosing the View Help selection on the Help menu. This file contains the full XREF Encyclopedia manual, information on how we enter part specifications, a spec detail abbreviation glossary, and a list of our part replacement codes. Clicking on View Online Help will launch your default browser and take you to the XREF Publishing Company resources page. Contact Information brings up our address, phone/fax #s, and web info.

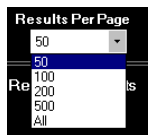
The History buttons will move you back and forward through previous searches



The Search Term drop down box also allows quick navigation through previous searches



This list behaves like searching in a browser, so for a linear list of your entire search history click on the File menu at top right and select Full Session Search History and select the term desired



You may select how many results per page are displayed in the main results window, however, it is highly recommended that this be left at 50 as larger numbers of results per page will cause the results to load slower, especially when the number of results is a large quantity

To move down through the list of results, you may use your mouse scroll wheel, the page down on your keyboard or by using the various scroll bars located to the right or bottom of the program’s windows



You can abort a search by clicking the same button you click to start a search. If a search has not yet completed and you attempt to execute another search by clicking on a part number in the results window, you will automatically cancel the previous search.

**FOR MORE INFO: (360)385-4279 (M-F 8AM-5PM PACIFIC TIME) [www.xrefpub.com](http://www.xrefpub.com); [info@xrefpub.com](mailto:info@xrefpub.com)**